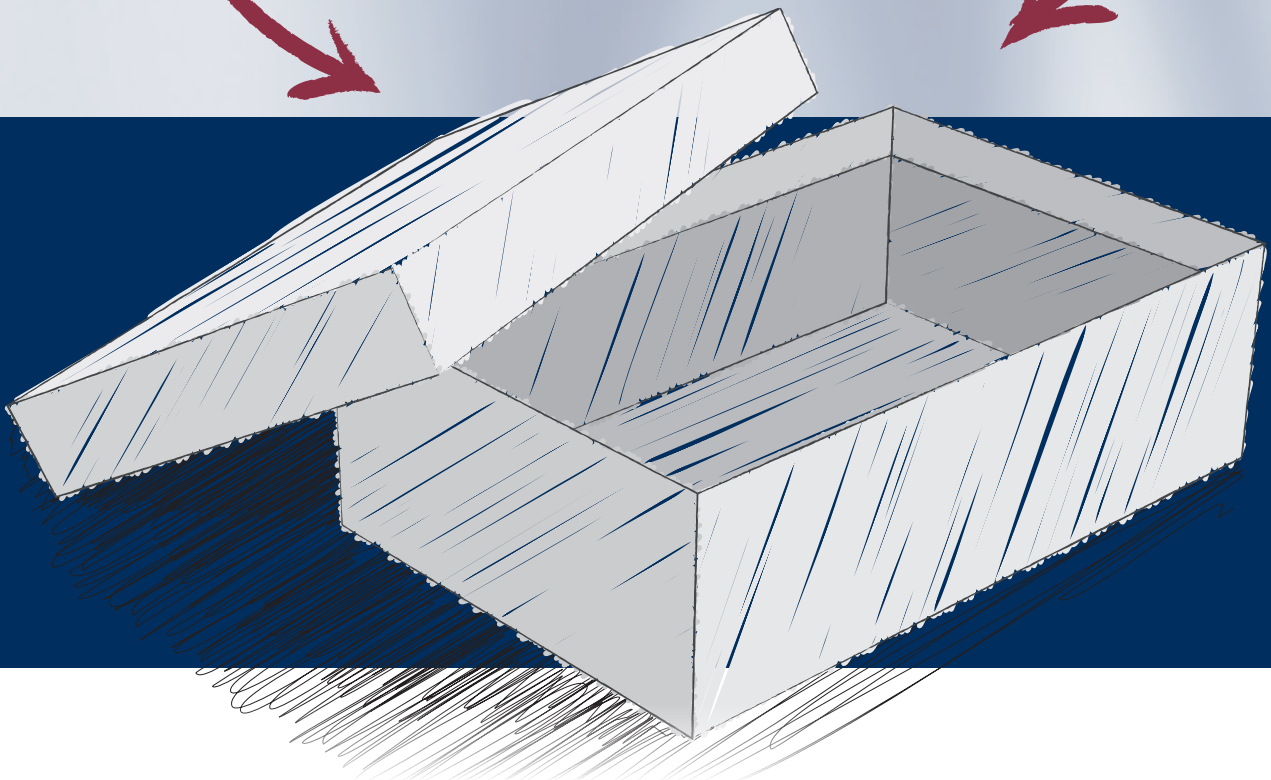


REITEL

MINI-LAB

*Optimize your lab space with
space-saving equipment combinations!*



- » Stable support through sturdy stainless steel casing
- » Efficient material removal with high-quality grinding discs
- » Easy-to-clean design with a removable front panel

- ROTOGRIND CLASSIC** | 1.300 €
Wet trimmer (without disc)
- Set Corundum** | 1.570 €
Trimmer + grinding disc
- Set Sil.-Carb.** | 1.570 €
Trimmer + grinding disc
- Set PW** | 2.170 €
Trimmer + grinding disc
- Set DELTA** | 2.450 €
Trimmer + grinding disc



- » Rapid pressure build-up with an integrated tank heater
- » Ergonomically shaped gun with a Luer Lock adapter
- » Versatile applications with various nozzle options



STEAMY MINI | 1.530 €
Steam cleaner



« See the experience report of a dental technician about his daily work with REITEL laboratory equipment.

- » Collects contaminants
- » Can be placed flexibly anywhere in the laboratory
- » Easy to clean thanks to a removable grid

STEAM BOWL | 275 €
Steam bowl



- » Infinitely adjustable speed up to 4,500 RPM
- » Polishing unit can be wall-mounted with upward-directed air for full power
- » Easily replaceable and washable filter at 40°C

POLIRET MINI | 2.900 €
Polishing unit



- » Optimal service for your patients with fast and effective cleaning performance
- » Infinitely adjustable speed control up to 3,000 RPM
- » The cup features an additional seal and is suitable for sterilization.

PROTOFRESH | 1.090 €
Denture cleaner



- » Cleans tools and instruments quickly and effectively – even in hard-to-reach areas
- » Temperature and time are adjustable individually
- » Comprehensive accessories available

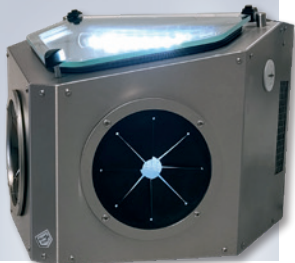
SONIRET SWEEP | 750 €
Ultrasonic cleaning unit



- » Integrated suction system, making the unit completely self-sufficient and immediately ready for use.
- » Bright, water-protected LED lighting for a clear view even during wet processing (e.g., zirconia).
- » Robust stainless steel housing with a large glass viewing panel for an unobstructed view of the work area.
- » Ergonomic rubber cuff entries and a connection for hand-pieces for comfortable delicate work.

NEW!

ERGORET EASY | 870 €
Workstation with extraction system



- » No need for a compressed air connection, thanks to the integrated vacuum pump
- » Stirring with just one hand motion
- » Includes a 400 ml cup
- » Stand optional

VACURET EASY | 1.490 €
Vacuum mixing device

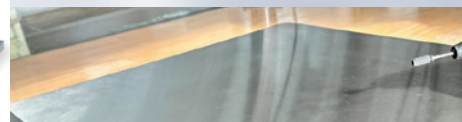


- » Independent laboratory workstation with ergonomically shaped real wood surface
- » Dust and gases are directly extracted
- » Includes vice and LED lighting
- » Optional magnifying glass

ERGORET COMFORT | 960 €
Workstation



WORK PAD | 55 €
Stainless steel



- » Three selectable light frequencies
- » Ample maneuverability with a large access surface
- » Timer can be set individually and to the second
- » Equipped with high-performance LEDs

POLYCURE | 1.950 €
Light curing device



- » Brightness and color temperature are continuously adjustable
- » Perfect for accurate color reproduction at daylight level
- » Includes three memory slots for favorite light settings

LED MINI / COMFORT | 960 € / 1.350 €
Table installation set

SCREW CLAMP / WALL MOUNTING SET | 110 € / 80 €
Optional

- » Intensity can be adjusted individually
- » Two selectable vibration frequencies
- » Suction cup feet ensure stability and absorb vibrations
- » Includes a vibration/rattle plate

VIBROMAT | 660 €
Vibrator



- » Combines rotary and micro-fine blasting in a single device, saving space in the lab
- » Available with two or three abrasive chambers
- » Heated containers prevent nozzle clogging and ensure consistent material flow
- » Includes maintenance-free quick stop feature

SANDUBLAST 2 | 1.590 €
Recycling and microfine sandblaster



Your purchase price* _____ Your leasing rate* _____

Distributor/Branch office* _____

Address _____

Phone / Mail _____

Name / Signature _____